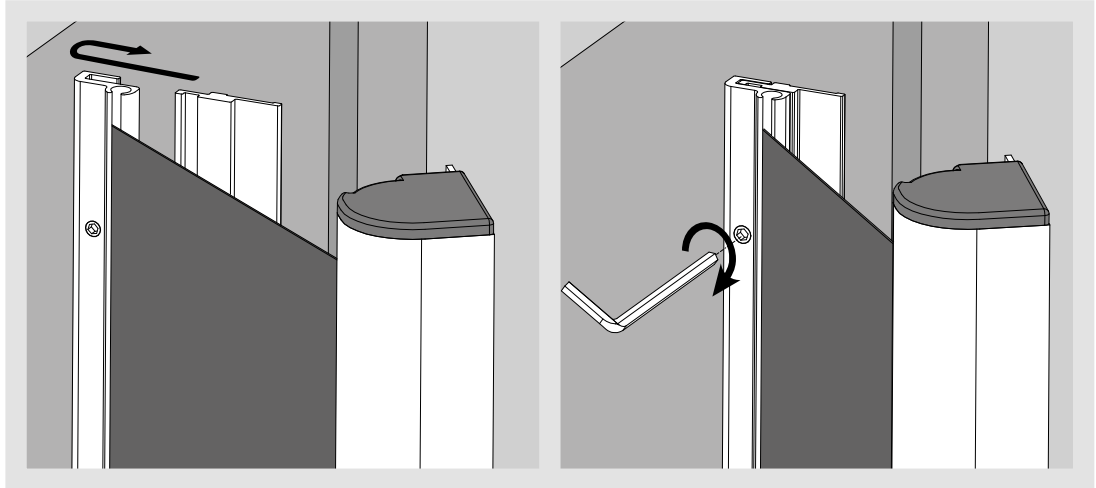


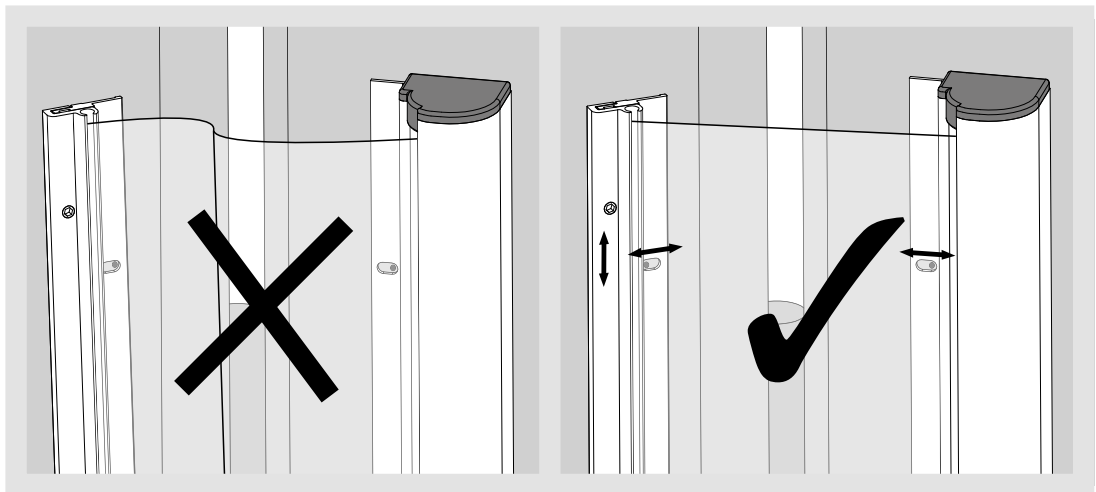
Blinds mounting / positioning, maintenance

Clip-on:



The easy clip-on system developed by Planet allows you to effortlessly install the textile profile and then tighten it up easily with the Allen key. (FSR 6000 / FSR 7000)

Positioning:



The position of both the finger protection blind and the suspension profile can be moved to the left and right, and the textile profile can be moved up and down if required. (FSR 6000 / FSR 7000)

Maintenance:

Inspect every two years for correct operation and dirt. Clean or replace if necessary.